

Roll-Rite® Super Duty Series

Dump Truck & Trailer Tarp Systems

...for multi-axle trucks with up to 26 feet of tarp or trailers with up to 44 feet of tarp



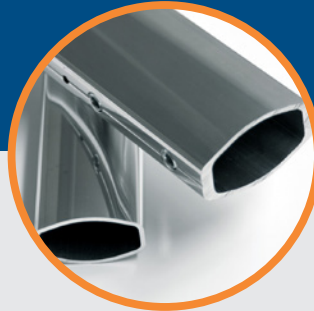
Roll-Rite® Super Duty Series



Electric Motor



Tarp Spool Kits



Arms & Bows



Pivot Mounts

Quality, durable tarp components engineered for demands of heavy duty truck & trailer tarping.

Super Duty Tarp Systems May Include:

■ The Electric Motor:

Reliable, Long-Life. Our patented Super Duty gear motor, designed for the high-torque demands of tarping, features a spur and helical gear configuration with forged heat treated gears and precision ground bearings for a much longer-life transmission. Features the industry's only 5-year non-prorated warranty against premature wearout

■ The Tarp Spool Kits:

Easy Installation. Our tarp spool kits are available in a variety of mounting options and come complete with gear motor, tarp axle with stub shaft, electric kit, wiring and mounting hardware

■ The Roll-Rite Arms:

Durable Construction, Professional Appearance. Roll-Rite tarp arms consist of a lower pivot arm and telescopic upper tarp bow. Each are made from a specially treated, high strength extruded aluminum alloy for the lightest, most durable tarp arm with maximum strength to weight ratio and attractive profile

■ The Tension Bow:

Secure tarp behind truck cab guards that measure over 8" tall

■ The Offset Bow Arm Option:

Angles pivot arm profile to avoid load zone or clear cab doors. Available in

30° or 45° Elbows to offer widest range of adjustability for a customized fit

■ The Pivot Mounts:

External spiral torsion 5-spring pivots are suited for bigger dump trucks using tarps up to 26 feet. Optional mounting brackets are available.

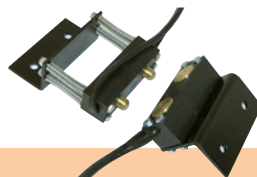
For trailers our Under Body, greasable roller bearing pivot mount offers a slimmer profile than external mount, available with straight or knuckle arms

■ The Knuckle Pivot Option:

For low clearance tarp arm operation, our optional knuckle pivot arm for trailers reduces interference from overhead hazards



■ Dual Conductor Plug Set



■ Contact Plates



■ Rite-Touch™ Electric Kit Option

Options & Accessories: Convenient options and trailer accessories are available from Roll-Rite:

- Heavy Duty Dual Conductor Plug Set
- Contact Plates reduce amount of wiring necessary for longer trailers
- Rite-Touch™ Electric Kit with Amp Sensing Technology has built-in protection with auto shut off to prevent tripping of breaker on tarp wind up if operator does

not release switch. Eliminates hassle of resetting tripped breakers and prevents downtime

Super Duty 500

For Multi-Axle Trucks Using up to 26 feet of Tarp... Base System: #65710:

- Super Duty 97" Tarp Spool with Wind Deflector
- 5-Spring External Mount Pivot Set
- Tarp Bow



Super Duty 5000

For Trailers Using up to 26 feet of Tarp... Base System: #65000:

- Super Duty 92" Tarp Spool with Integrated Housing
- 5-Spring Under Body Mount Pivot Set
- Wide Tarp Bow



Super Duty 6000

For Trailers Using up to 34 feet of Tarp... Base System: #66000:

- Super Duty 92" Tarp Spool with Integrated Housing
- 6-Spring Under Body Mount Pivot Set
- Wide Tarp Bow
- Option Shown: Knuckle Pivot Set



Super Duty 8000

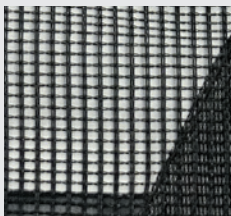
For Trailers Using up to 44 feet of Tarp... Base System: #68000:

- Super Duty 92" Tarp Spool with Integrated Housing
- 8-Spring Under Body Mount Pivot Set
- Wide Tarp Bow



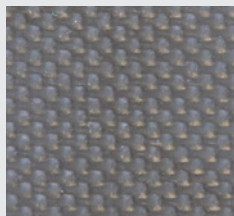


Tarps By Roll-Rite®



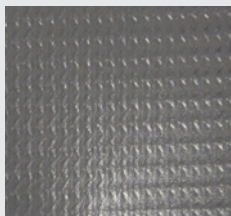
Premium Mesh

- Load Type: Aggregates, General
- Fabric: 7.7 oz premium 7.5x5 weave with two 1000 denier polyester UV coated twisted strands (1500Dx1000D)
- Key Benefit: Premium strength, longer life cycle than industry standard mesh



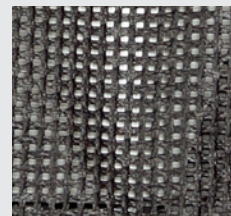
HD Vinyl (18 oz)

- Load Type: Moisture or temperature sensitive (non-asphalt)
- Fabric: 18 oz. Heavy Duty waterproof vinyl (cold crack resistance -40°F)
- Key Benefit: Waterproof material to keep loads mostly dry or maintain temperature range (non-asphalt)



Heat Resistant Asphalt

- Load Type: Asphalt
- Fabric: 15 oz. vinyl urethane coated on both sides for high heat applications to 400°F (cold crack resistance -22°F)
- Key Benefit: Withstands up to 400F to help maintain proper asphalt temperature



Premium HD Mesh

- Load Type: Demanding Debris
- Fabric: 15 oz. premium PVC coated 6x6 weave with three 1300 denier high tenacity polyester threads that form single 3900 denier strand
- Key Benefit: Meets durability needs of more demanding loads



A Safe Fleet Brand

RollRite.com • 800.297.9905

650-RR-SuperDuty-4PG-20191212

Copyright ©2019 Safe Fleet and its subsidiaries. All rights reserved. No part of this publication may be reproduced by any means without written permission from Safe Fleet. The information in this publication is believed to be accurate. However, Safe Fleet does not make any representation or warranty to that effect and does not assume responsibility for any consequences resulting from use of such information. Revisions or new editions of the publication may be issued (or not issued) in our discretion to incorporate such changes.

1.877.630.7366
safefleet.net

SAFE  FLEET
Driving Safety Forward™