

Roll-Rite® TarpMaster® Series

Dump Truck & Trailer Tarp Systems

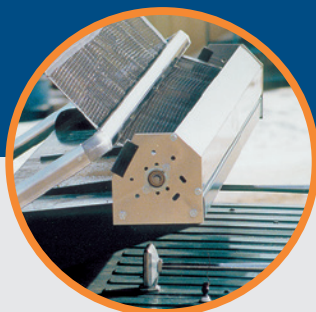
...for trucks & trailers using up to
26 feet of tarp



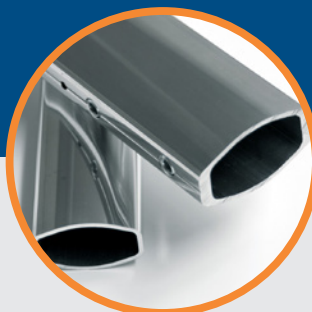
Roll-Rite® TarpMaster® Series



Electric Motor



Housing & Tarp Spool



Arms & Bows



Pivot Mounts

Quality, durable tarp components engineered for the demands of tarping municipal trucks.

TarpMaster® Tarp Systems May Include:

- **The Electric Motor:** The TarpMaster is engineered for high torque tarping. A high-polished chrome-plated casing, designed for virtually corrosion-proof protection, adds a distinct, professional appearance to your truck. The TarpMaster is warranted for a period of 5-years with the industry's only non-prorated warranty against premature wearout
- **The Housing & Tarp Spool Kits:** Easy Installation. Our housing and tarp spool kits are available in a variety of styles and mounting options. Our most popular style is the wind deflector for standard wind and tarp protection. Additional styles include an Full Housing for ultimate wind protection, Integrated Housing for gusset mount on trailers, and a Tarp Spool Only for cab guards that allow an integrated tarp axle. Kits come complete with gear motor, tarp axle with stub shaft, electric kit, wiring and mounting hardware
- **The Roll-Rite Arms:** Durable construction, professional appearance. Roll-Rite tarp arms consist of a lower pivot arm and telescopic upper tarp bow. Each are made from a specially treated, high strength extruded aluminum alloy for the lightest, most durable tarp arm with maximum strength to weight ratio
- **The Tension Bow:** Secure tarp behind truck cab guards over 8" tall
- **The Offset Bow Arm Option:** Angles pivot arm profile to avoid load zone or clear cab doors. Available in 30° or 45° Elbows to offer widest range of adjustability for a customized fit.
- **The Pivot Mounts:** External spiral torsion 3-, 4- or 5-spring pivots are suited

for trucks or trailers using from 16 feet up to 26 feet of tarp. Optional mounting brackets are available. The High Mount Option for TarpMaster 400HM 4-spring systems allows arms to be mounted high on the body where required by applications such as spreaders or belly dumps. Fully adjustable pin for custom indexed spring pressure. Heavy duty 3/8" plate steel bolts to aluminum bodies. Automotive style studs of SAE 404 4037 material will not back out

- **Rite-Touch™ Option:** Rite-Touch™ Electric Kit with Amp Sensing Technology has built-in protection with auto shut off to prevent tripping of breaker on tarp wind up if operator does not release switch. Eliminates hassle of resetting tripped breakers and prevents downtime



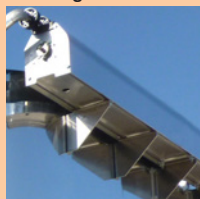
Housing Styles:

Roll-Rite offers housing styles to suit your truck or trailer needs:

- Full



- Integrated



- Wind Deflector



- Tarp Spool Only



- Rite-Touch™ Electric Kit Option

TarpMaster® 400

For Tandem Trucks Using up to 22 feet of Tarp... Base System: #64170:

- TarpMaster 97" Tarp Spool with Wind Deflector
- 4-Spring External Mount Pivot Set
- Tarp Bow



TarpMaster® 400HM

For Tandem Trucks Using up to 22 feet of Tarp... Base System: #64170HM:

- TarpMaster 97" Tarp Spool with Wind Deflector
- 4-Spring External High Mount Pivot Set
- Tarp Bow



- EZ-Mount base for High Mount Pivot Installation



- Shown (above): Tension Bow Option

TarpMaster® 500

For Multi-Axle Trucks Using up to 24 feet of Tarp... Base System: #65712:

- TarpMaster 97" Tarp Spool with Wind Deflector
- 5-Spring External Mount Pivot Set
- Tarp Bow



- Shown (above): Offset Bow Arm Option

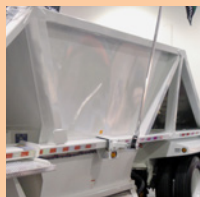
TarpMaster® 5000TM

For Trailers Using up to 26 feet of Tarp... Base System: #65000-TM:

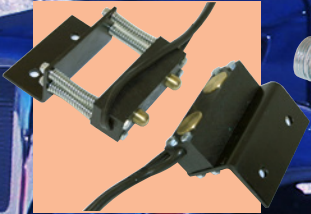
- TarpMaster 97" Tarp Spool with Integrated Housing
- 5-Spring Roller-Bearing Under Body Mount Pivot Set
- Wide Tarp Bow



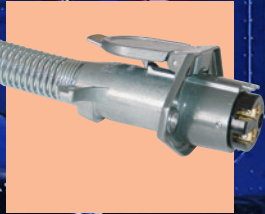
Specialty Applications: TarpMaster systems are ideal for transfer trailer trucks, stone slingers, grapple/bulk loaders, belly dumps and more.



Electrical Accessories

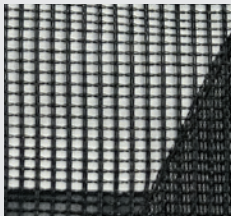


Contact Plate
Wiring Option



Dual Conductor
Plug Set

Tarps By Roll-Rite®



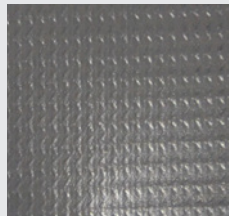
Premium Mesh

- Load Type: Aggregates, General
- Fabric: 7.7 oz premium 7.5x5 weave with two 1000 denier polyester UV coated twisted strands (1500Dx1000D)
- Key Benefit: Premium strength, longer life cycle than industry standard mesh



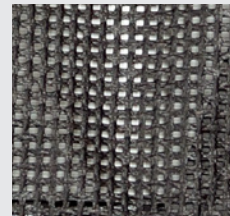
HD Vinyl (18 oz)

- Load Type: Moisture or temperature sensitive (non-asphalt)
- Fabric: 18 oz. Heavy Duty waterproof vinyl (cold crack resistance -40°F)
- Key Benefit: Waterproof material to keep loads mostly dry or maintain temperature range (non-asphalt)



Heat Resistant Asphalt

- Load Type: Asphalt
- Fabric: 15 oz. vinyl urethane coated on both sides for high heat applications to 400°F (cold crack resistance -22°F)
- Key Benefit: Withstands up to 400F to help maintain proper asphalt temperature



Premium HD Mesh

- Load Type: Demanding Debris
- Fabric: 15 oz. premium PVC coated 6x6 weave with three 1300 denier high tenacity polyester threads that form single 3900 denier strand
- Key Benefit: Meets durability needs of more demanding loads



A Safe Fleet Brand

RollRite.com • 800.297.9905

640-RR-TarpMasterOverview-4PG-20200302

Copyright ©2020 Safe Fleet and its subsidiaries. All rights reserved. No part of this publication may be reproduced by any means without written permission from Safe Fleet. The information in this publication is believed to be accurate. However, Safe Fleet does not make any representation or warranty to that effect and does not assume responsibility for any consequences resulting from use of such information. Revisions or new editions of the publication may be issued (or not issued) in our discretion to incorporate such changes.

1.877.630.7366
safefleet.net

SAFE  FLEET
Driving Safety Forward™